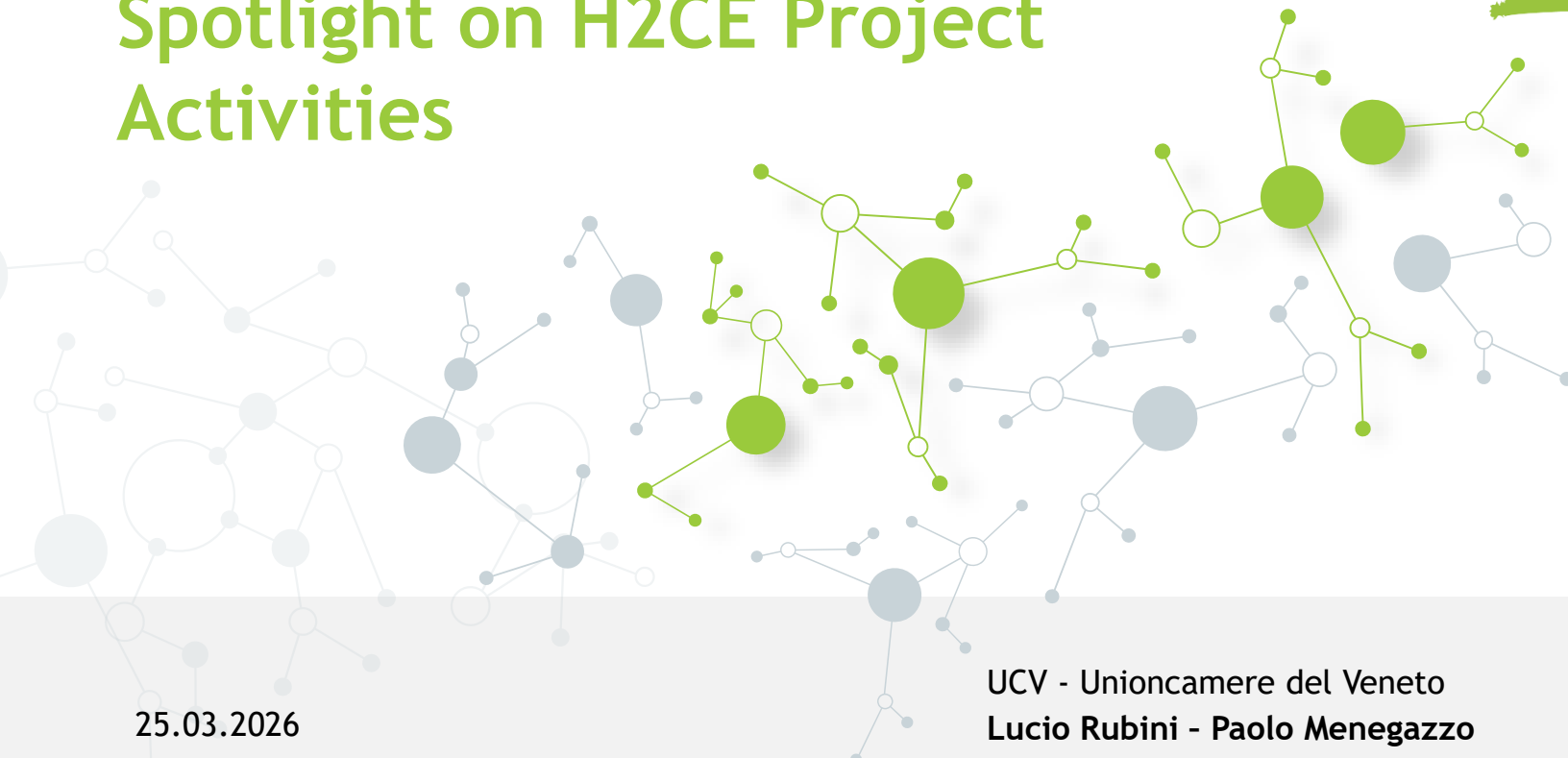


# Spotlight on H2CE Project Activities



25.03.2026

UCV - Unioncamere del Veneto  
Lucio Rubini - Paolo Menegazzo

# H2CE GIS Tool - Veneto Pilot

---

# WHY A GIS TOOL FOR HYDROGEN?



## Goals

- Support public authorities in planning hydrogen infrastructure at regional and local scale
- Provide a data-driven, spatially explicit basis for strategic decisions
- Identify hydrogen demand hotspots across sectors (industry, transport, residential)
- Simulate future scenarios of energy transition, enhance coordination among energy, mobility and territorial planning tools
- Focus: *empower regional decision-makers with a practical, visual, and interactive platform*



## *From stakeholder needs to spatial decision-making*

- Stakeholder engagement to define use cases and territorial needs
- Data collection from institutional sources (Unioncamere, ISTAT, ACI, Regione Veneto, ecc.)
- Standardization and georeferencing of energy consumption data
- Conversion to hydrogen equivalents using sector-specific coefficients
- Integration into Atlas GIS to enable spatial analysis and real-time scenario simulation
- The process combined statistical surveys, spatial intelligence and policy objectives

# DATA COLLECTION AND STRUCTURING

## *Primary source (original dataset)*

- Unioncamere del Veneto's industrial energy survey - Over 38,000 manufacturing firms (ATECO C, >10 employees)
- Data from Unioncamere's "Congiuntura" survey (longitudinal, quarterly)
- Includes: - Energy consumption by sector and municipality - Company size, production trends, fuel mix - First-time inclusion of hydrogen-specific questions - → A unique and original dataset, not available from other national sources - → Enables accurate mapping of potential hydrogen demand in the industrial sector

# KEY FEATURES

## *From data to decisions*

- Sector-based energy mapping:
  - Industry
  - Transport
  - Residential
  - Agriculture
- Identification of **high-demand areas**
- Interactive dashboard: Set hydrogen conversion levels & Simulate policy scenarios

# IMPACT & REPLICABILITY

## *Towards data-driven energy governance*

- Real-time evaluation of policy impacts
- Reduced uncertainty in investments
- Clear and actionable insights for public authorities

### **Scalable & replicable:**

- Open data approach
- Adaptable to other regions
- Upgradable with new datasets

# IMPACT & REPLICABILITY

## *Towards data-driven energy governance*

- Real-time evaluation of policy impacts
- Reduced uncertainty in investments
- Clear and actionable insights for public authorities

### **Scalable & replicable:**

- Open data approach
- Adaptable to other regions
- Upgradable with new datasets

H2 TRANSITION DASHBOARD

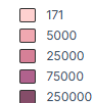
H2CE

Legend

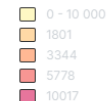
Search for data...

Energy Consumption (TOE per year)

Total Energy Consumption



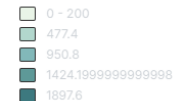
Residential



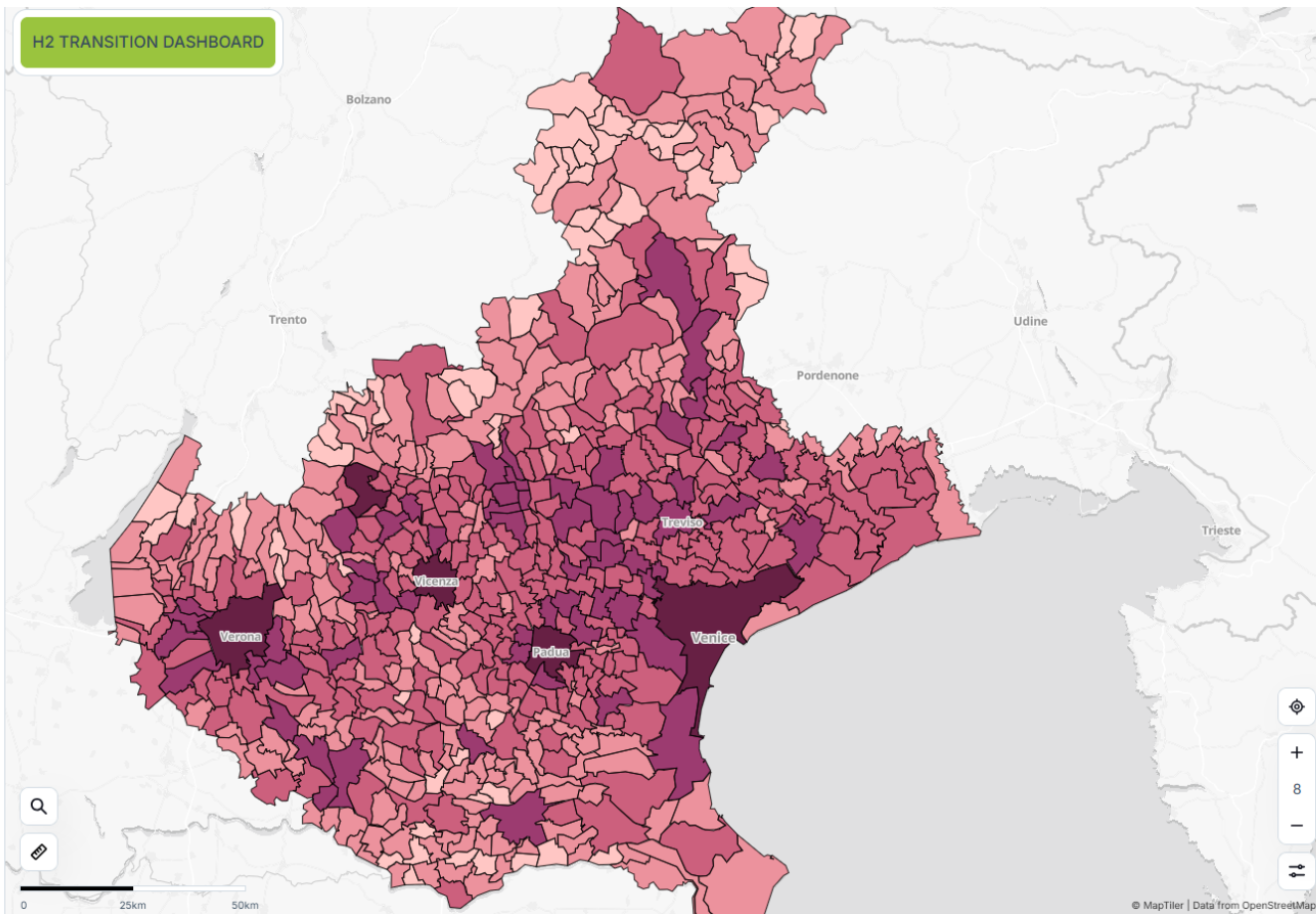
Private Transportation



Agricultural



Industrial



Filter

Filter

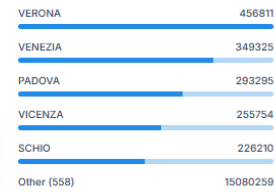


Agricultural (TOE/Year)



+ 560 more

Industrial (TOE/Year)



LIVE DEMO > [LINK](#)